

MOST IMPORTANT

JUMPIN' JACKPOT

To prevent game downtime and maximise profit.

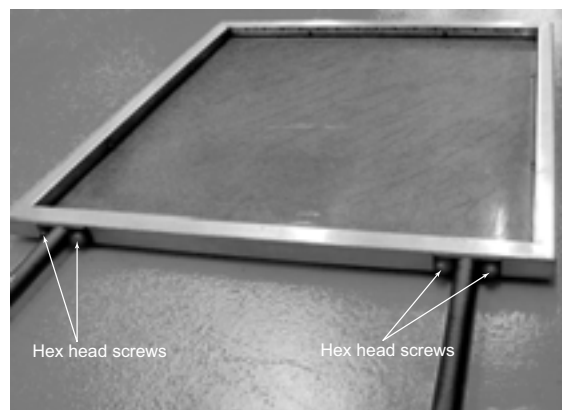
Installation instructions for fitting Platform Sensor Caps

As the sensor holes in the platform are currently open, dirt and dust is forming in the holes, preventing the sensors from operating correctly and stopping the game from working.

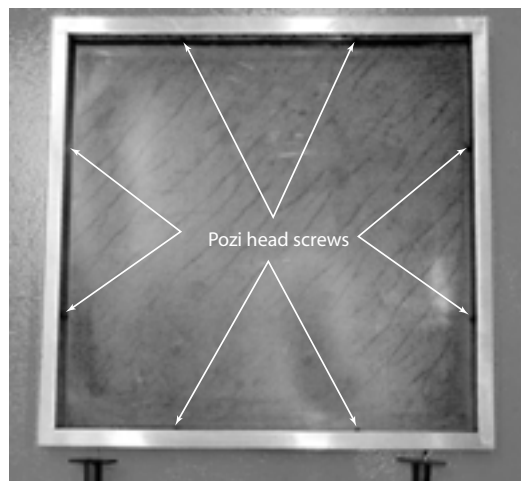
The enclosed clear plastic caps along with these instructions will prevent this problem from re-occurring and it is important that these caps are fitted to prevent game downtime and maximise profit.

To ensure continued operation please clean the face of the caps daily.

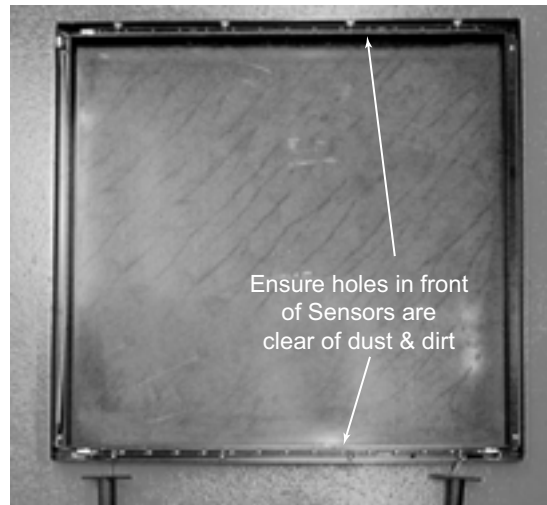
1. Switch the power to the game OFF.
2. Remove the Floor Mat.
3. Remove 4 off hex head screws securing the Pipes to the Platform.



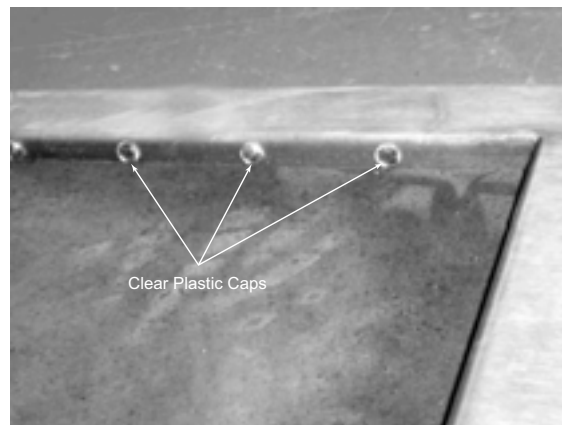
4. Remove 8 off pozi head screws retaining the Platform Cover.



5. Lift the Platform Cover up and remove.
Note: Take care not to catch the Sensor Harness attached to the Pipe.
6. Vacuum all dirt and debris from inside the platform making sure that the sensor holes



- are completely clear and open.
7. Refit the Platform Cover and secure with the 8 off pozi head screws previously removed.
8. Refit the Platform to the Pipes and secure with the 4 off screws hex head previously removed.



9. Snap the Clear Plastic Caps (supplied) into the Sensor Holes.
10. Refit the Mat ensuring that it is laying completely flat and not obstructing any of the sensors.
11. Verify the Platform Sensors are operating correctly by conducting the following routine:
 - a) Turn the game On and wait for the game to initialize.
 - b) Enter Lamp/Platform test by pressing and holding the "2nd Coin" button while pressing the Menu Test button.
 - c) Individually block each of the 15 sensor pairs and verify operation by observing the corresponding Tube Light Indicators.